

.RVNet-MB

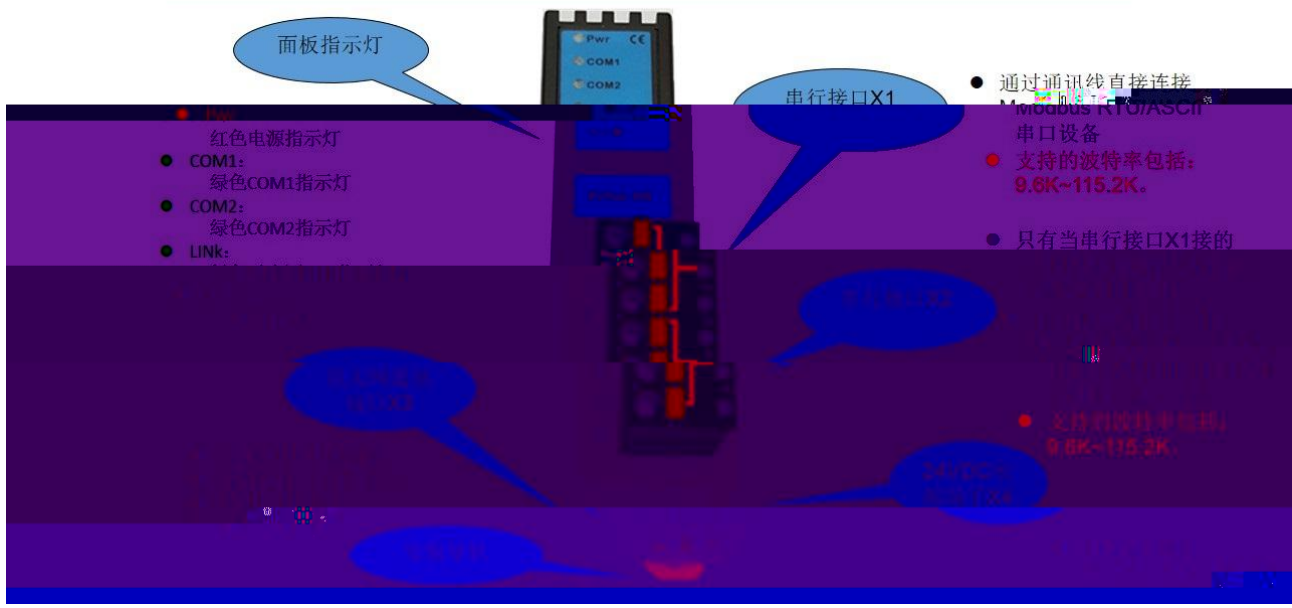
1.1

1.2

1.3

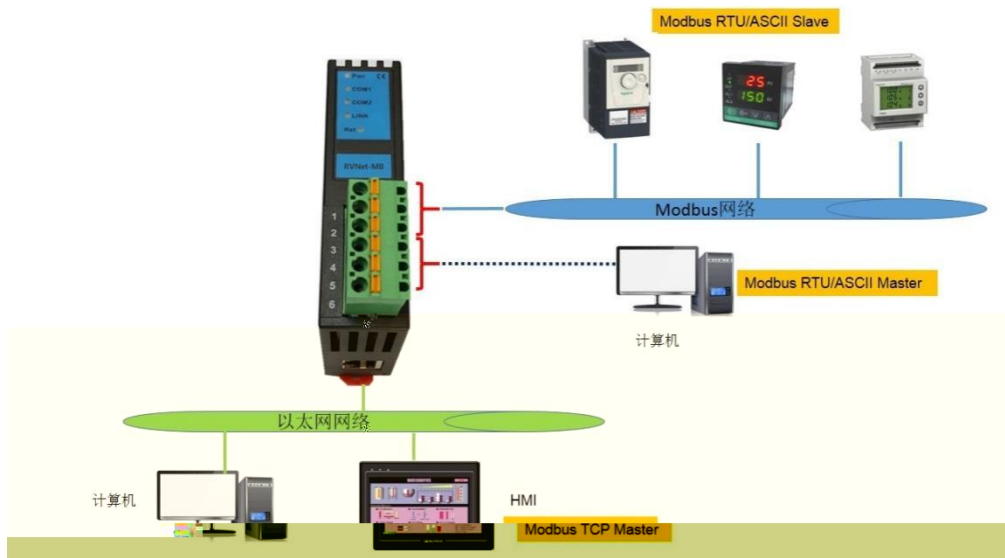
2.1

RVNet-MB产品的硬件和接口图



2.2

2.2.1



2.2.2



2.3

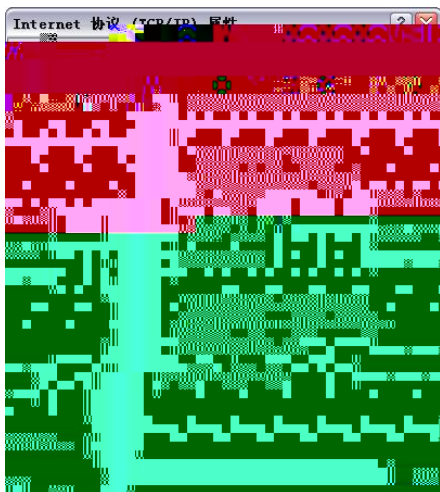
2.3.4 24VDC X4

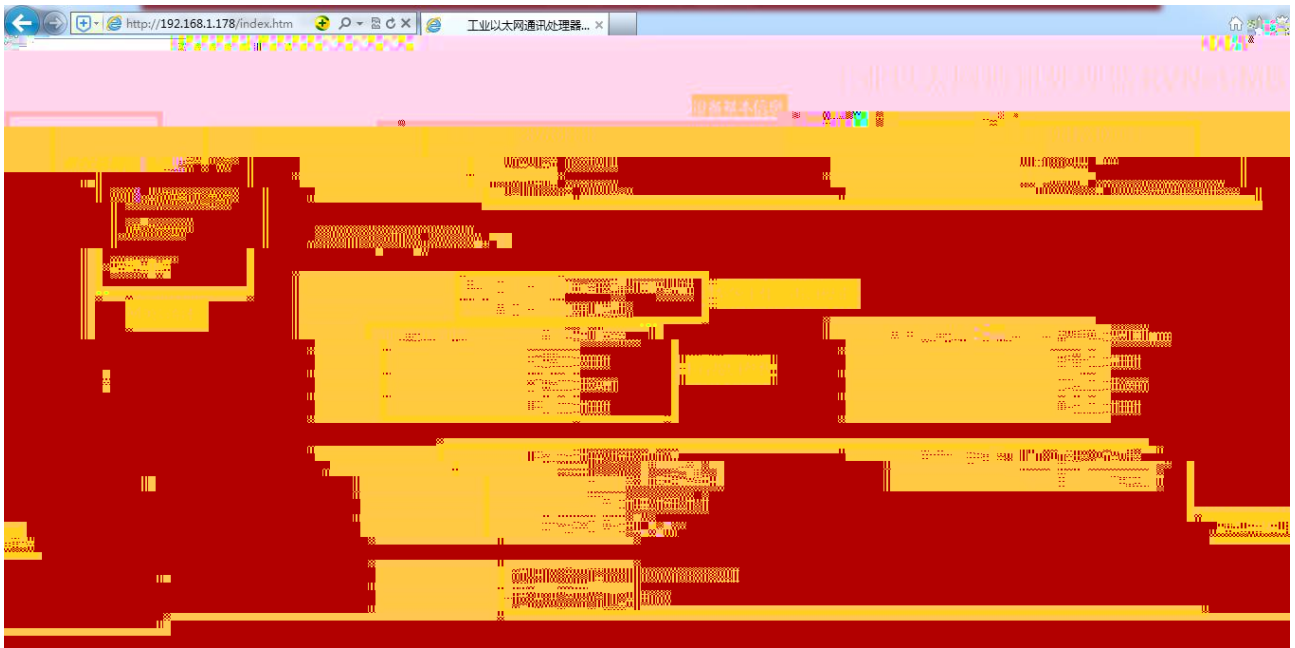
2.4

.

3.1

3.2 Web



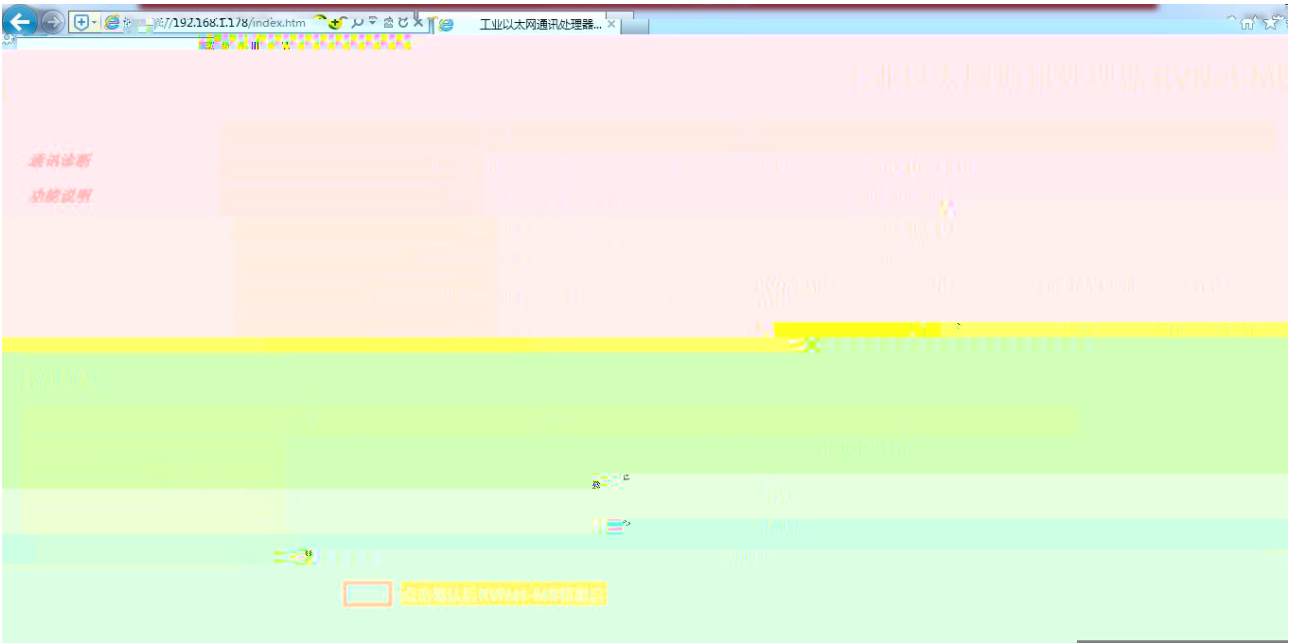


3.2.1



[Redacted content]

3.2.2



[Redacted content]

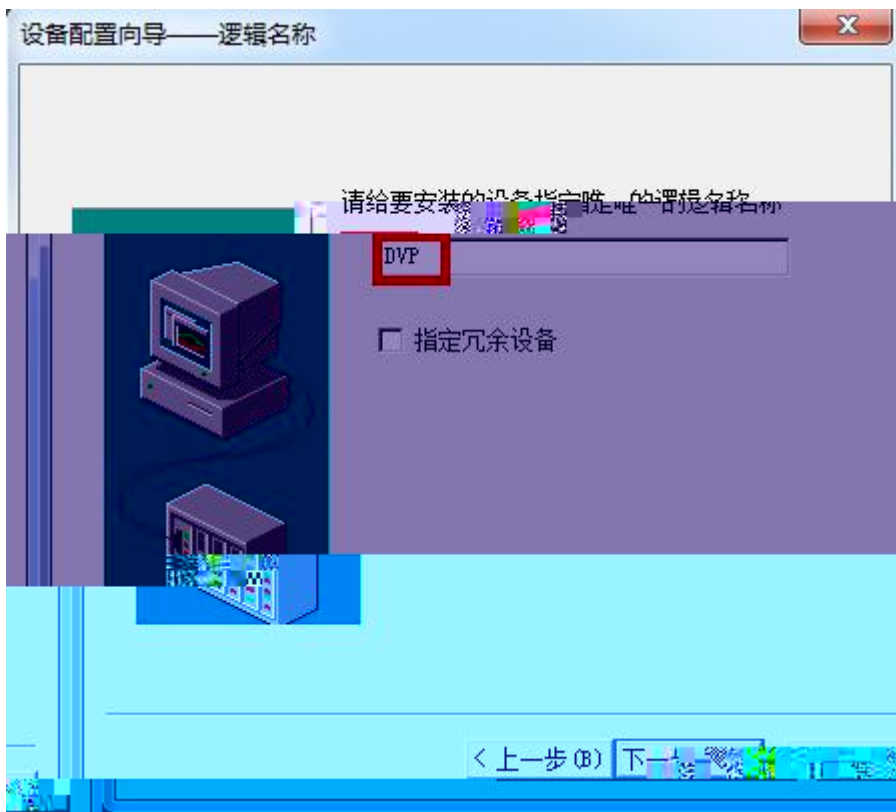
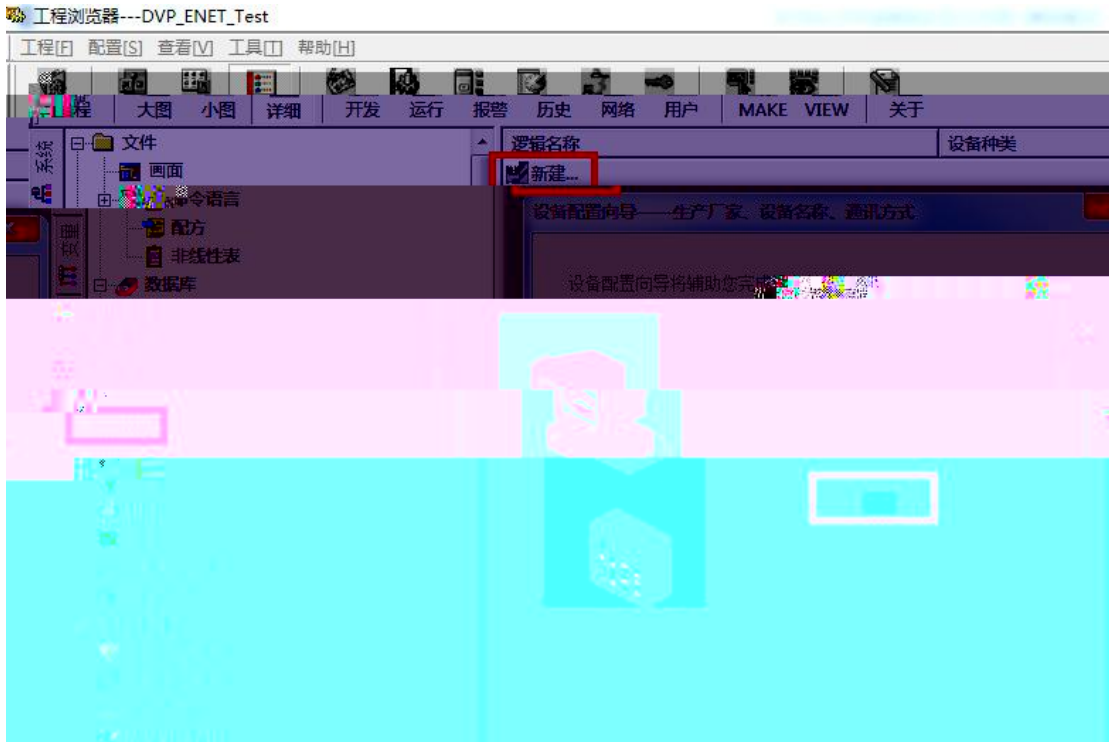
3.2.3

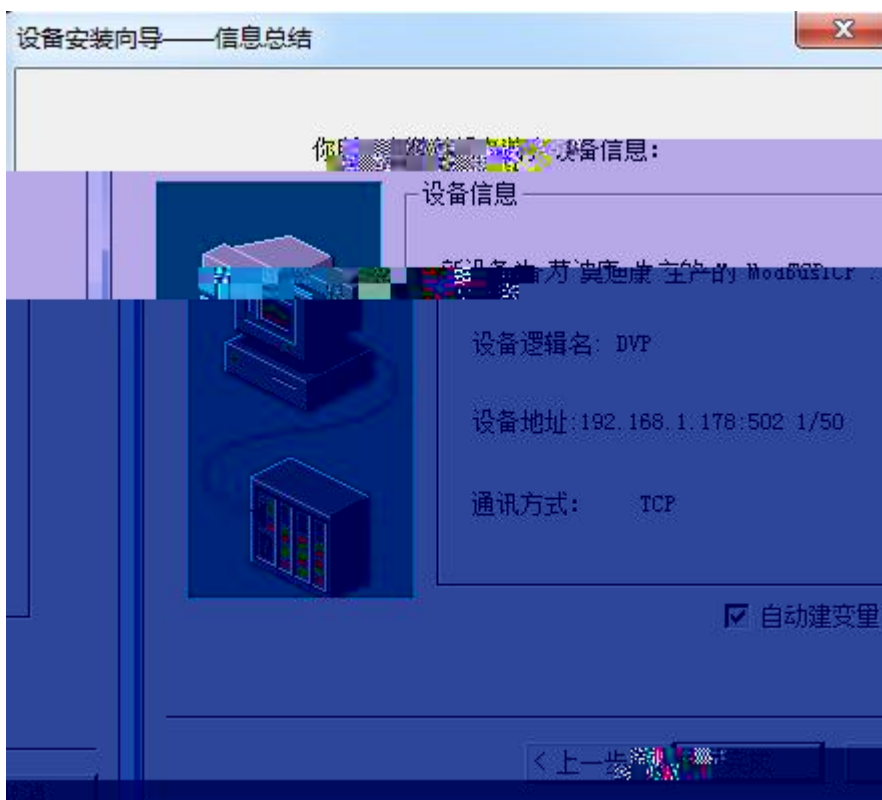
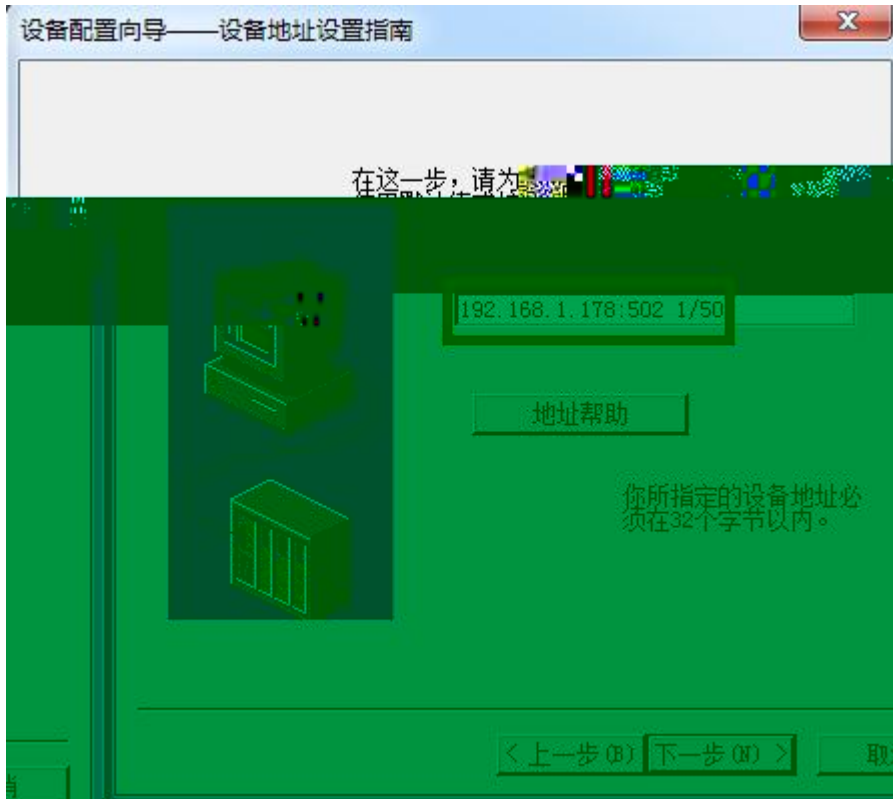


.SCADA

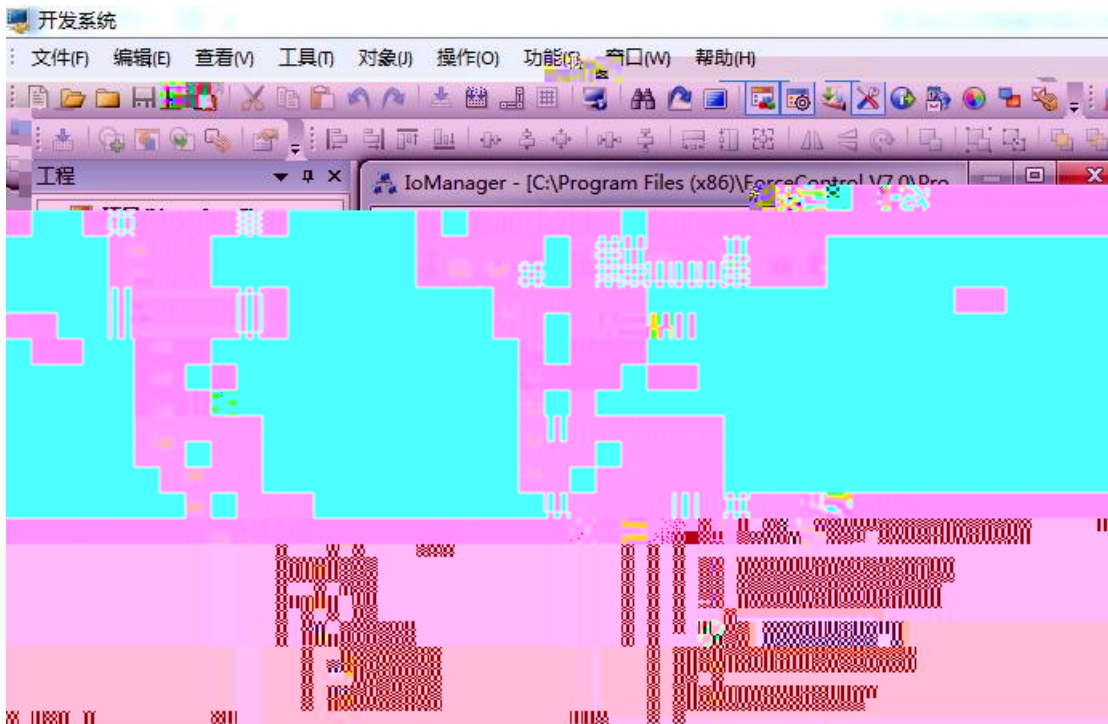


4.1 RVNet-



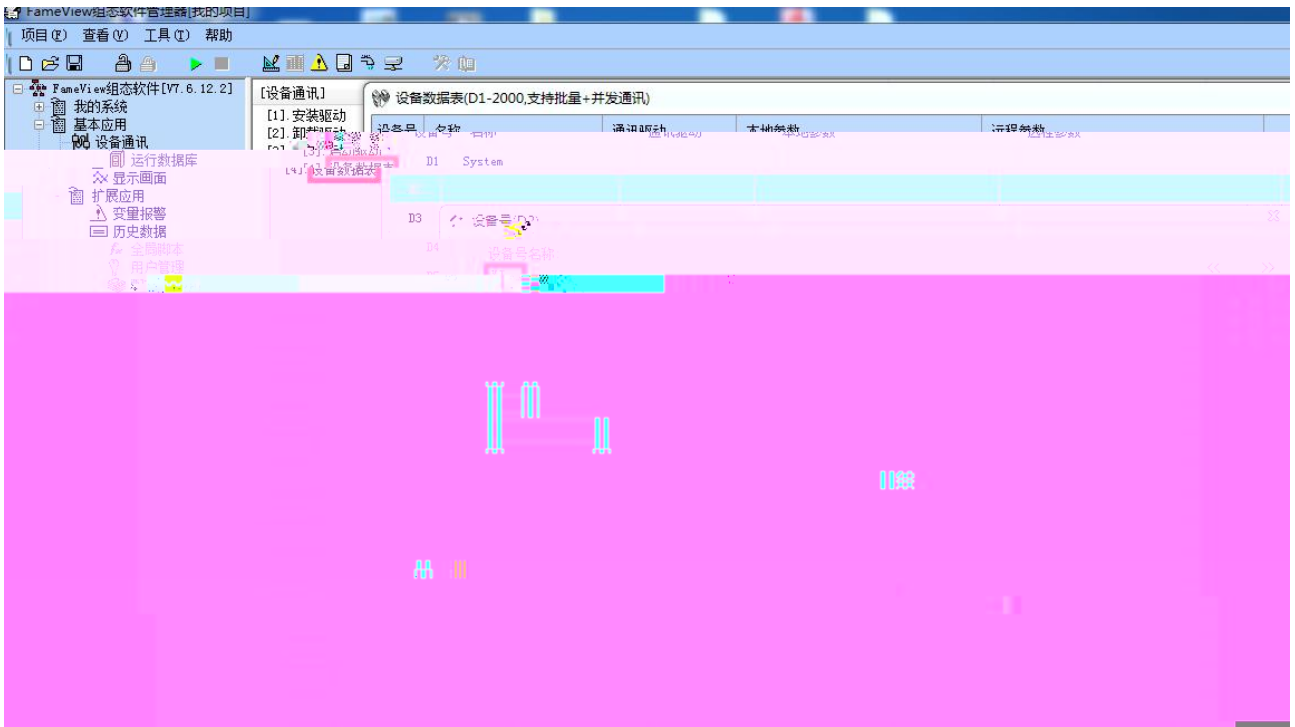
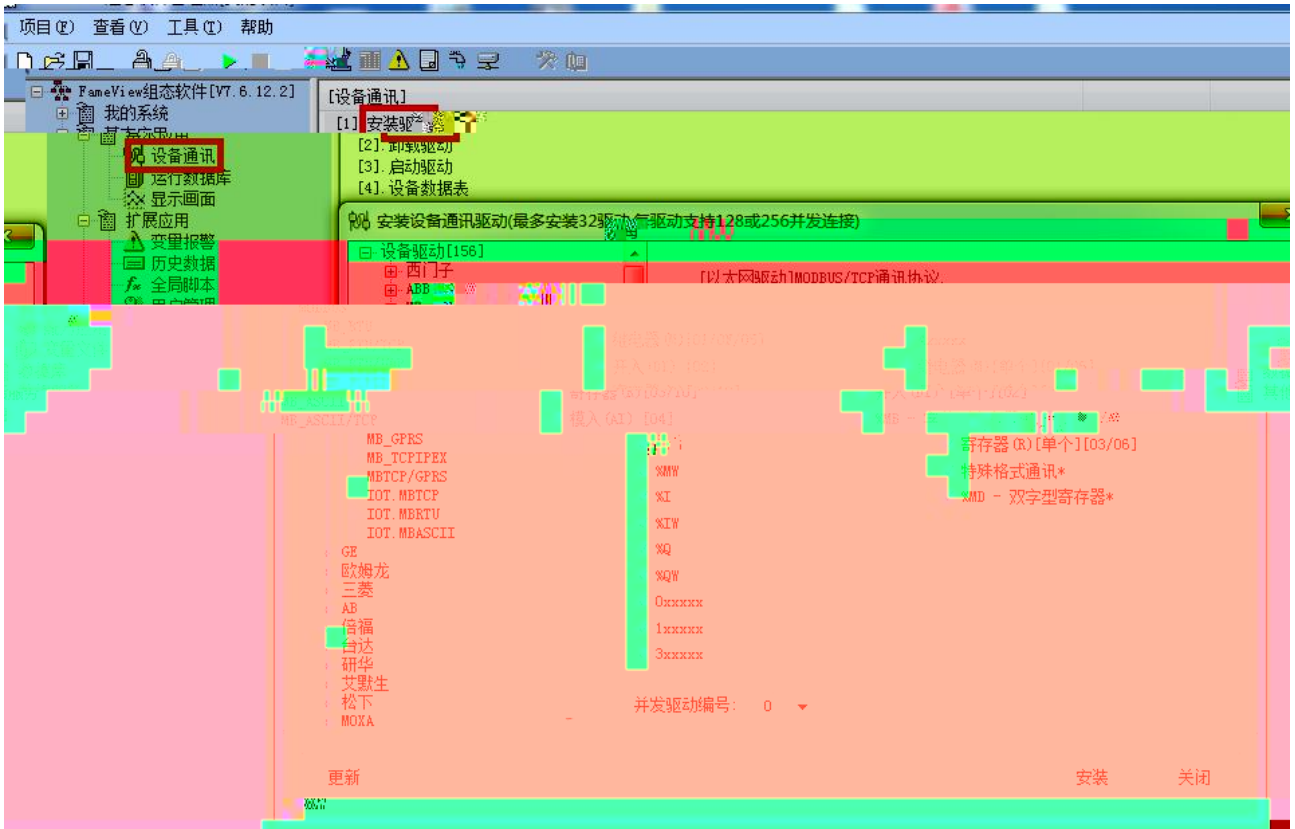


4.2 RVNet-MB

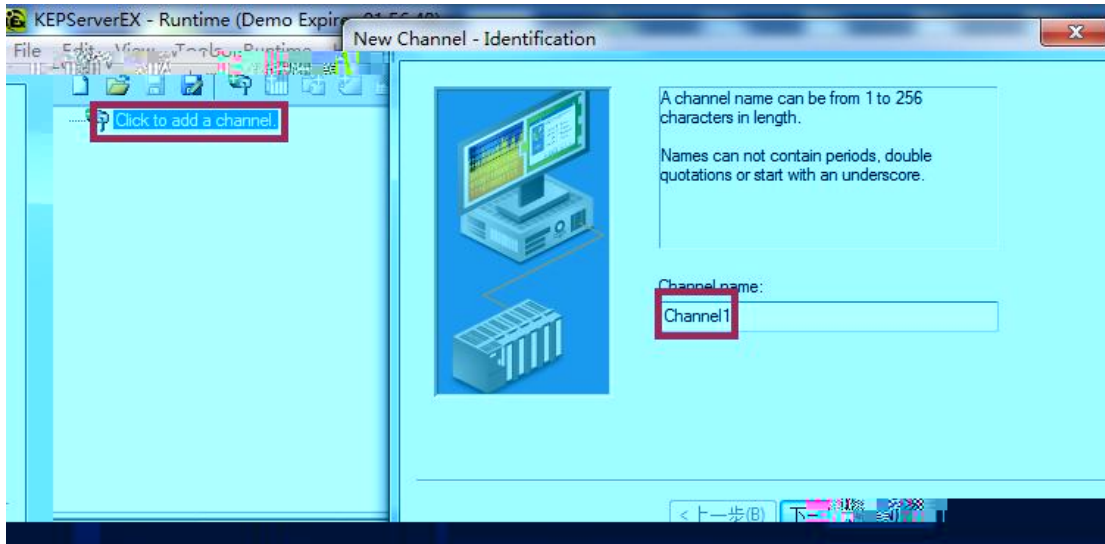


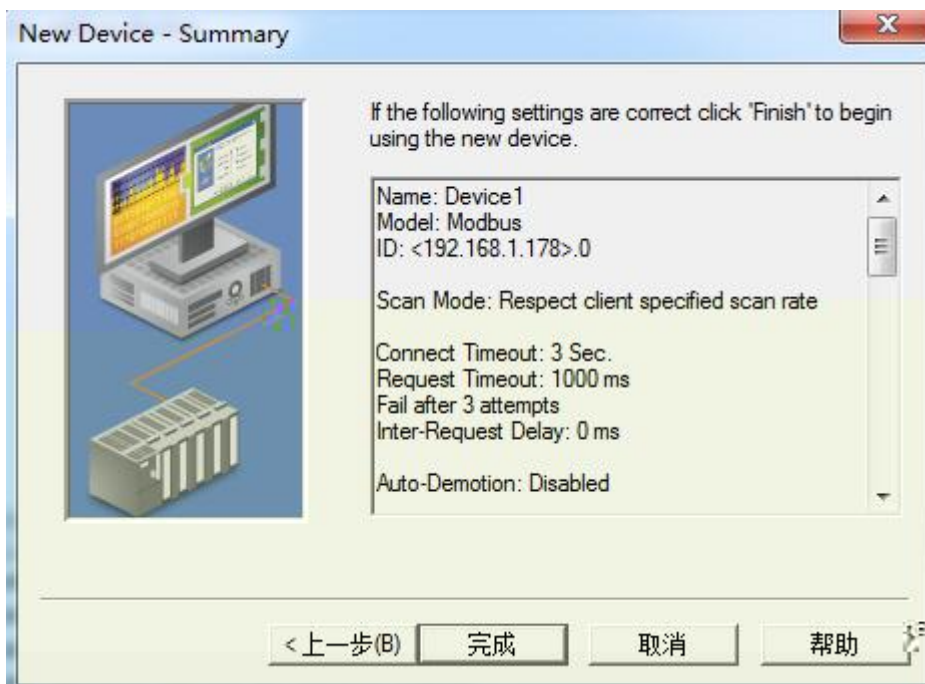
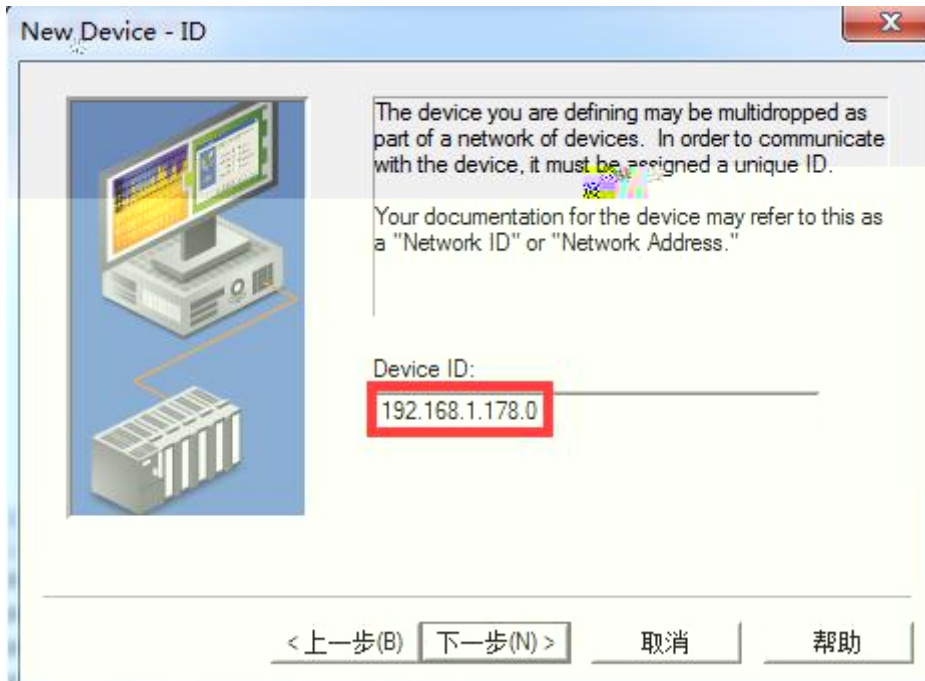


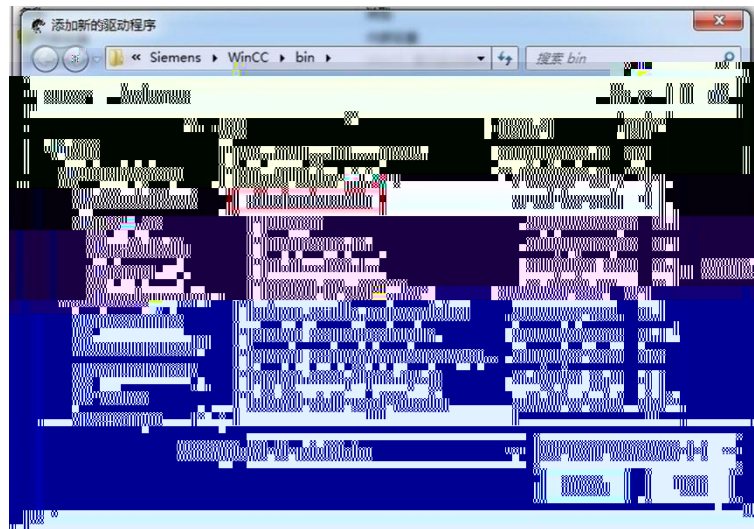
4.3 RVNet-MB



4.4 RVNet-MB Kepware







	Modbus
	Pwr COM1 COM2 Link
	IEEE 802.3 Link/Active Auto-MDIX
	RJ45
	10/100Mbps
	Modbus TCP

TCP	6
X1	RS485 RS232 9.6K~115.2Kbps Modbus RTU/ASCII
X2	RS485 RS232 9.6K~115.2Kbps Modbus RTU/ASCII
OPC	KepWare OPC
	IE 192.168.1.178
	24VDC 24VDC/100mA
	0~60
	90%
	35mm
	2014/30/EU
	4.5mm/30Hz/10Min
ESD	6KV
	60 168 50000
	30 PLC 1 3 0
	CE
L*W*H	90*24*65mm
	100g

•

