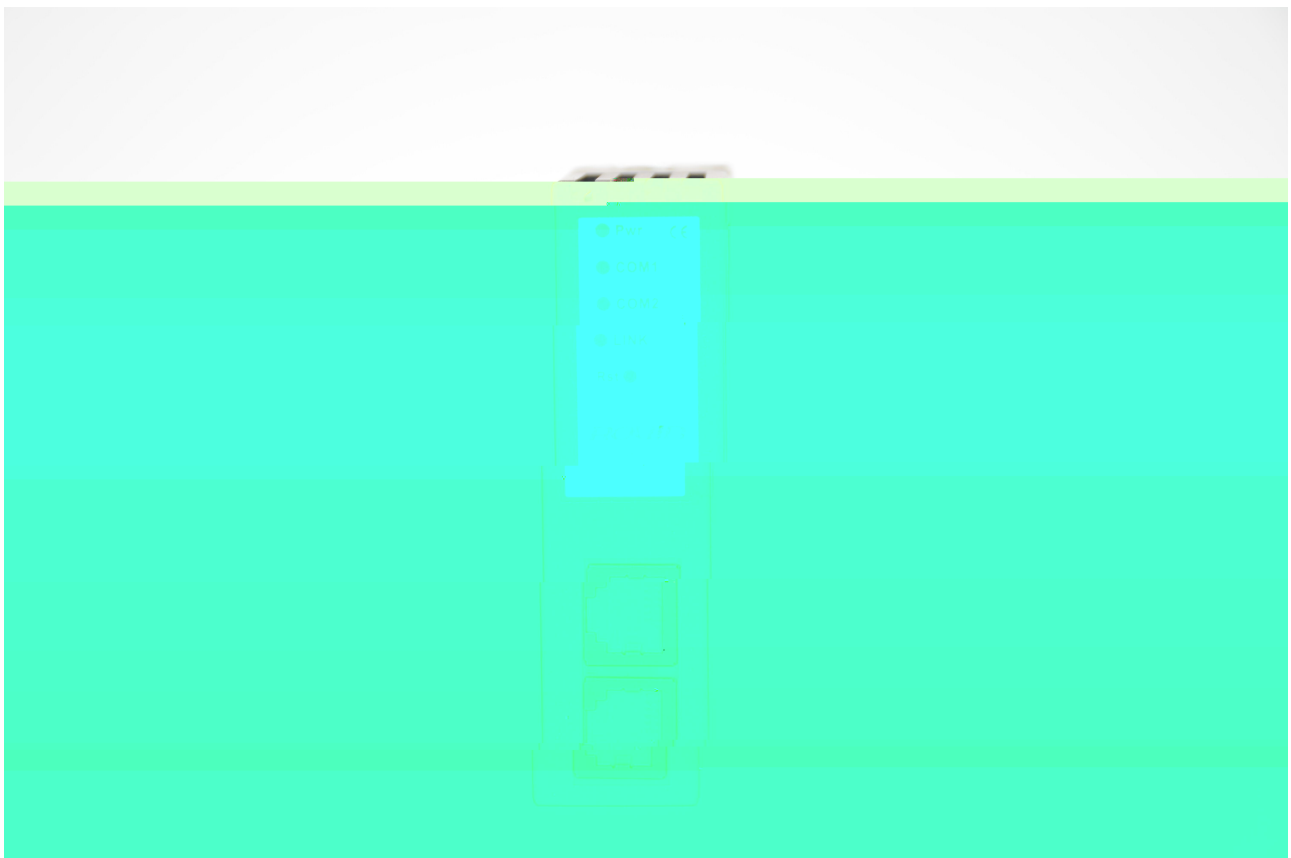


---

**ROUIN**



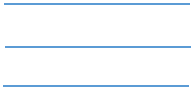




## RVNet-KV产品的硬件和接口图



X



X

X

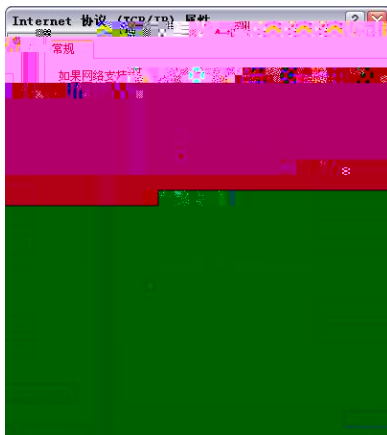


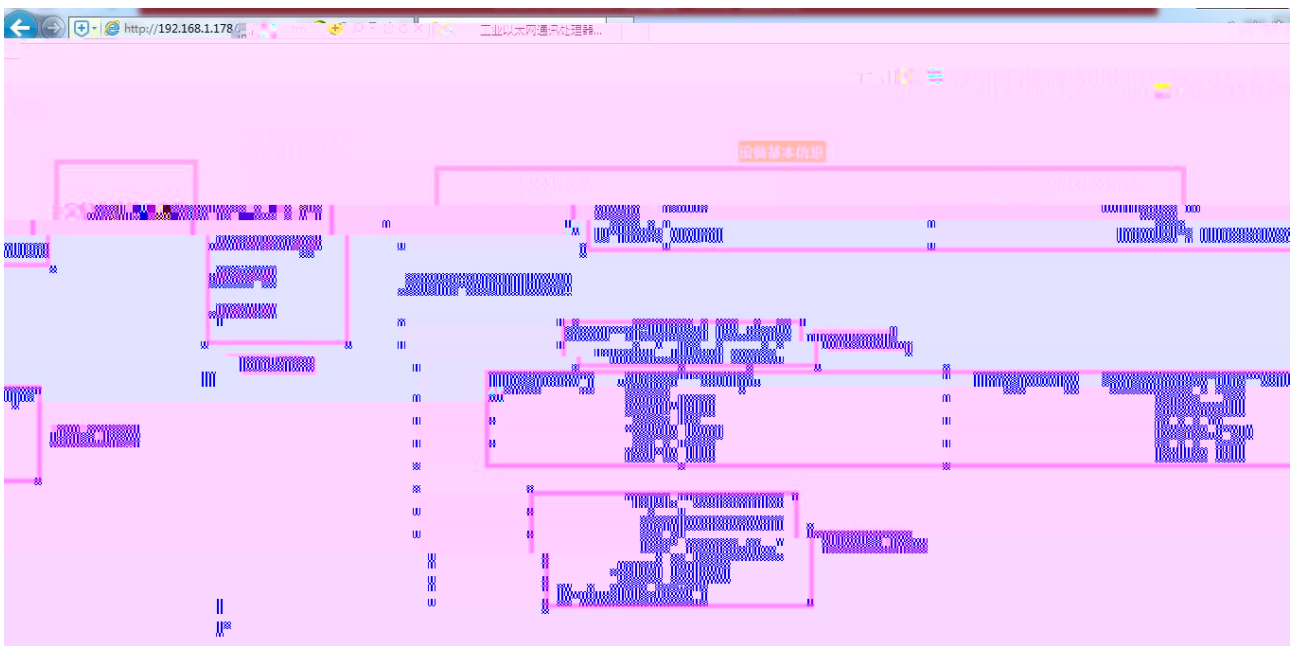
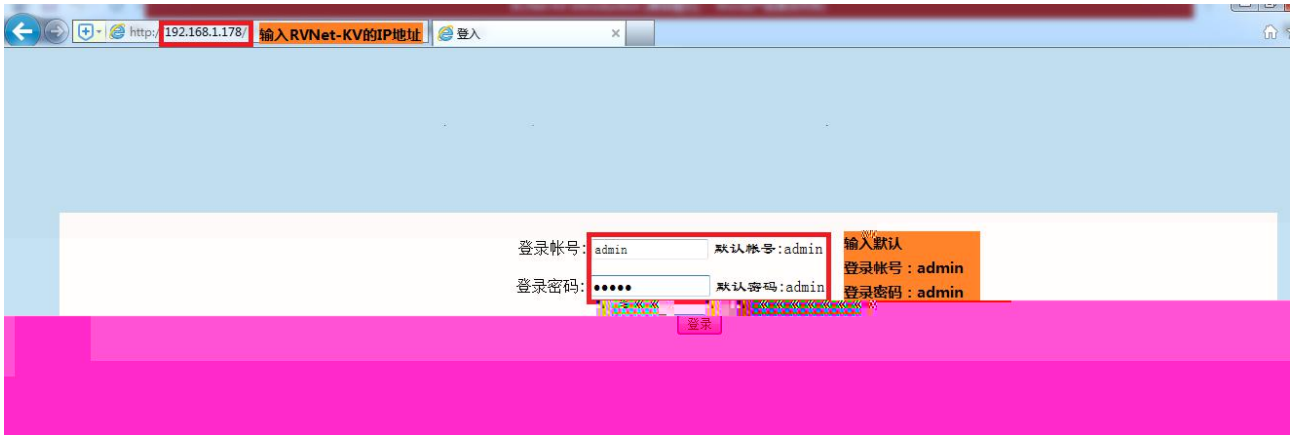
VDC

X



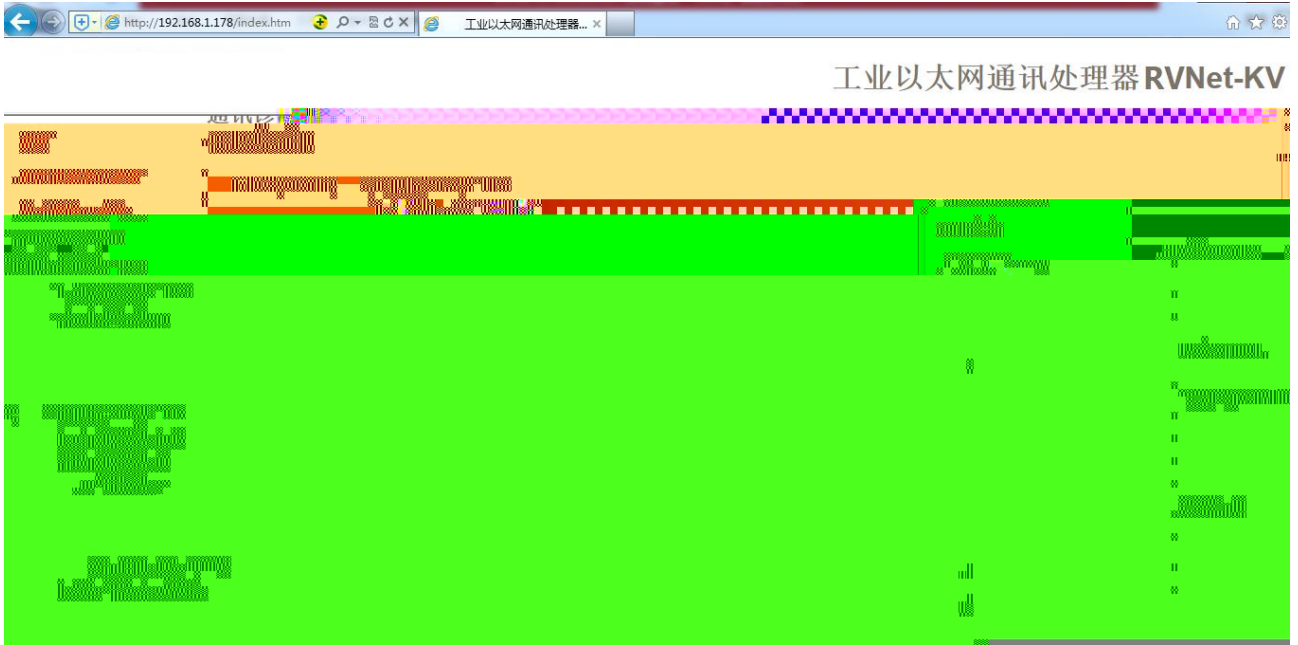

Web



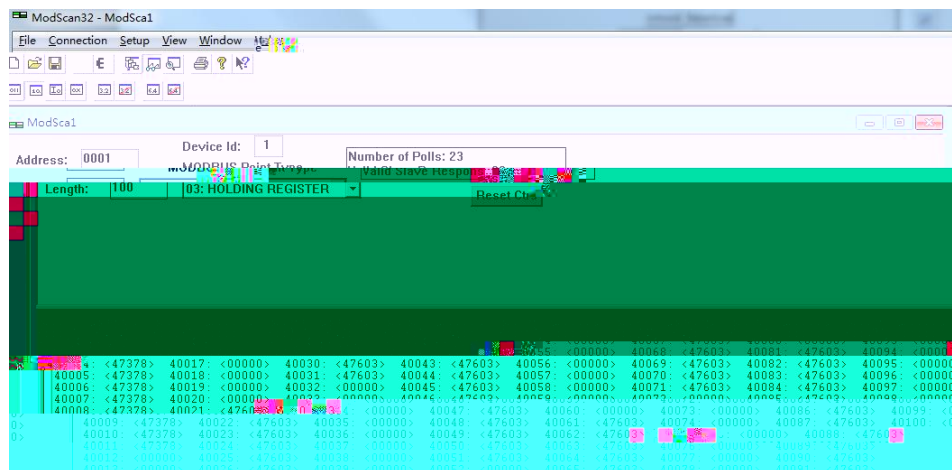
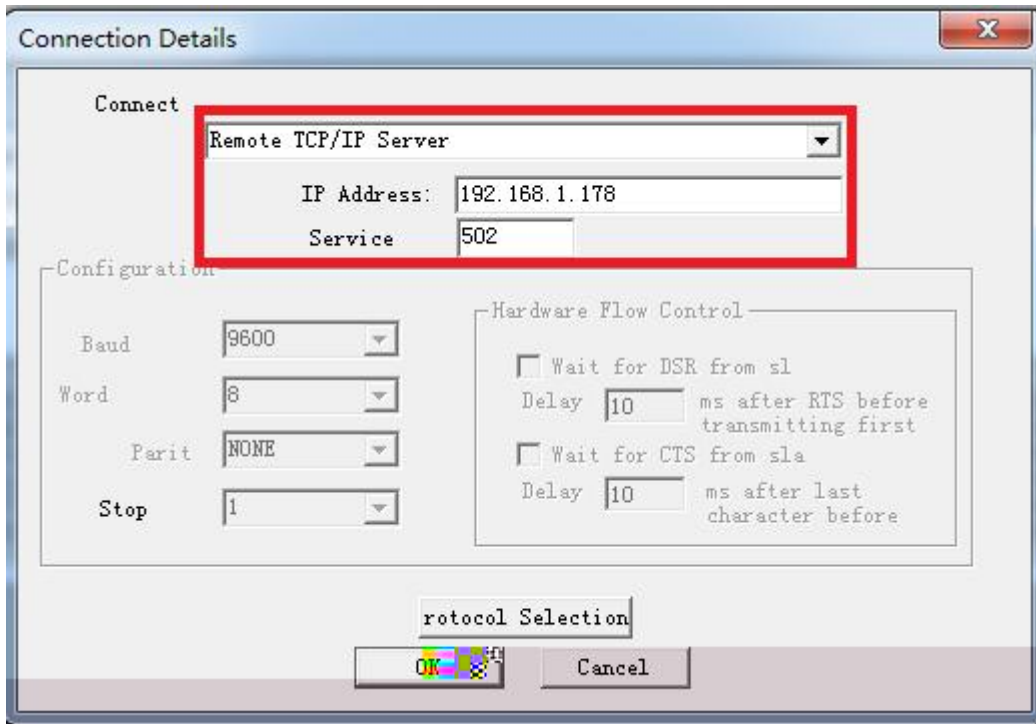


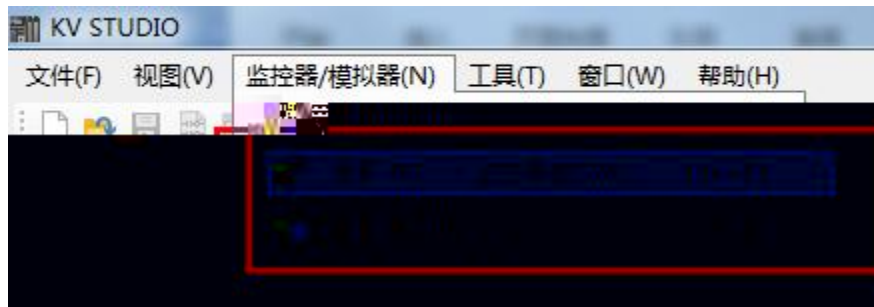
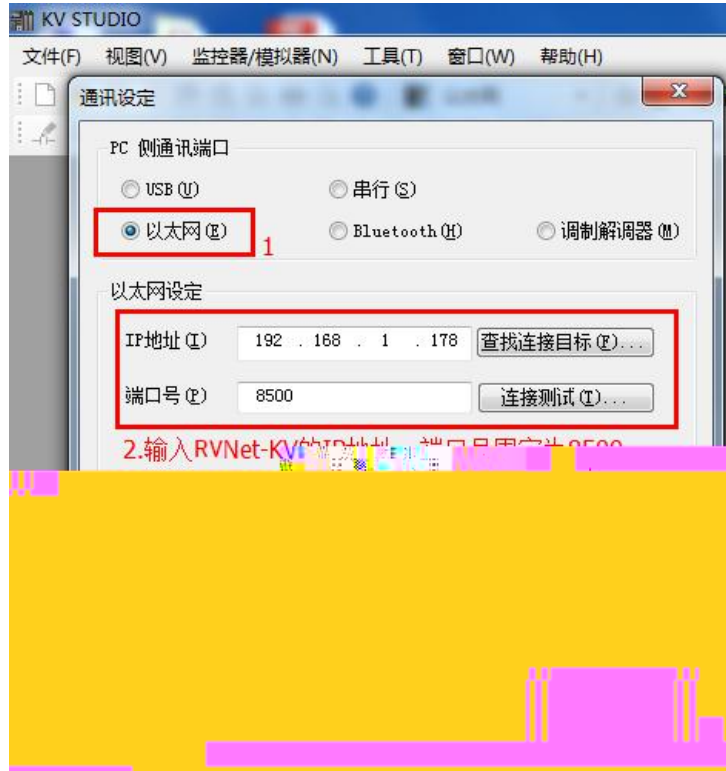
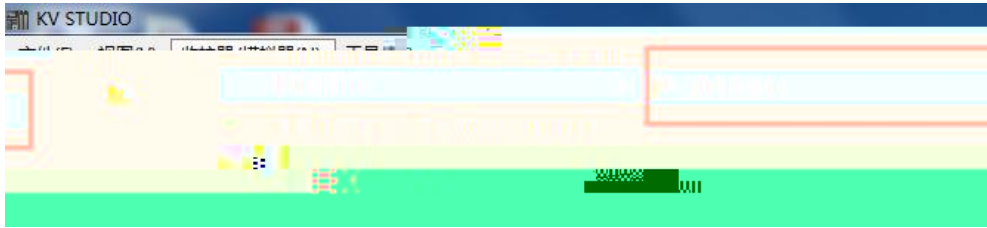


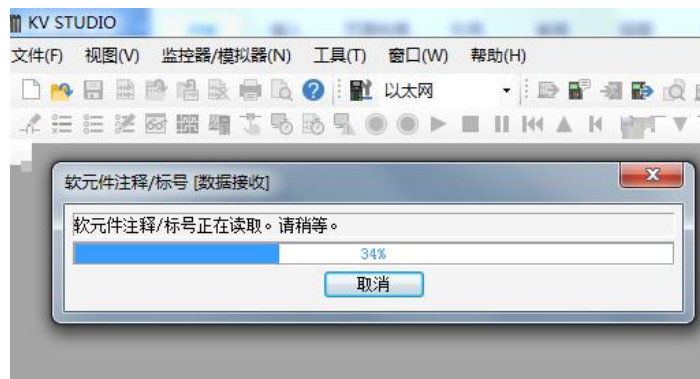
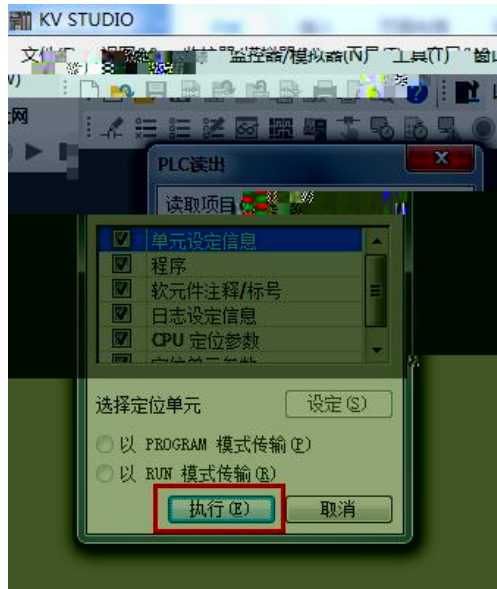




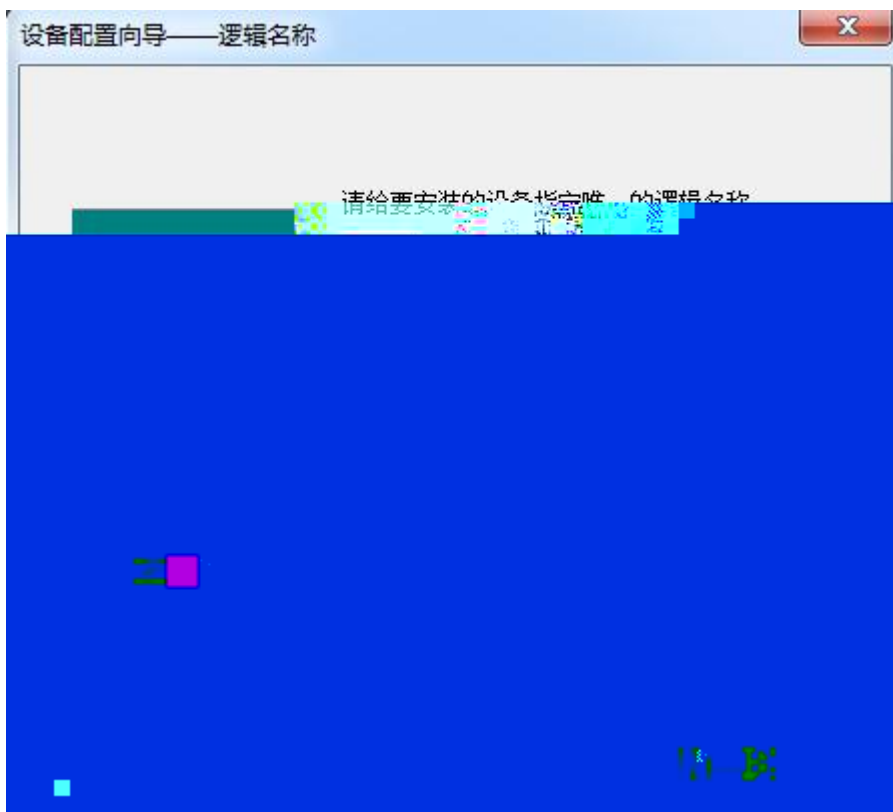
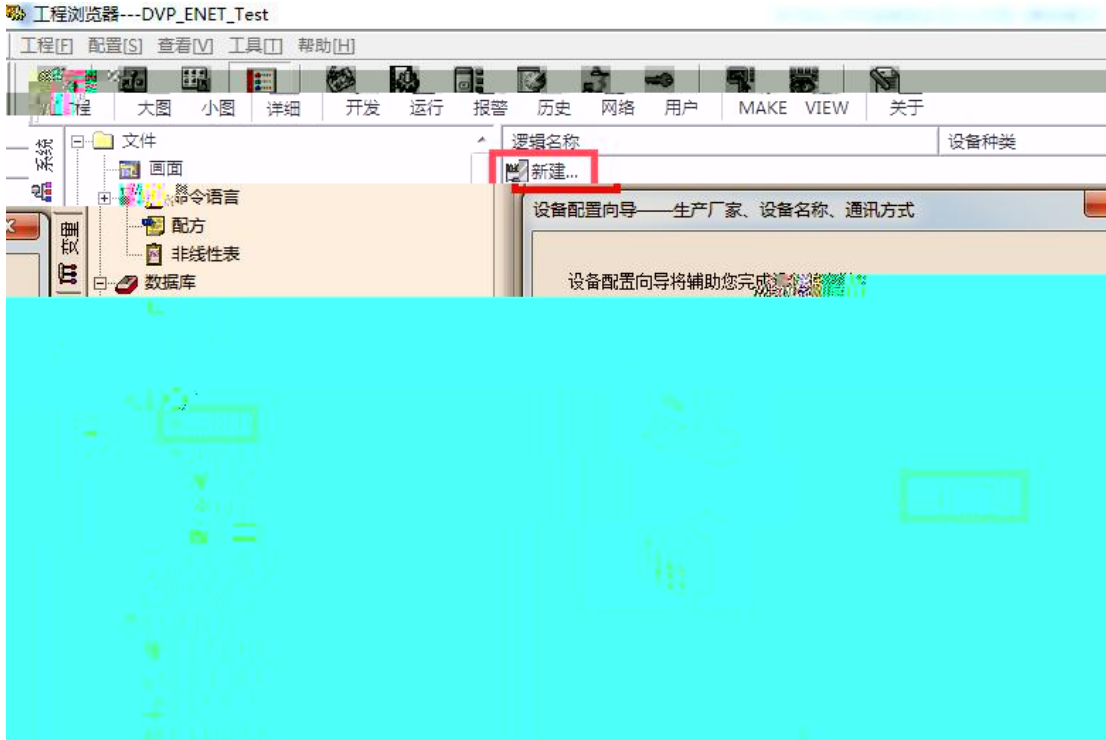


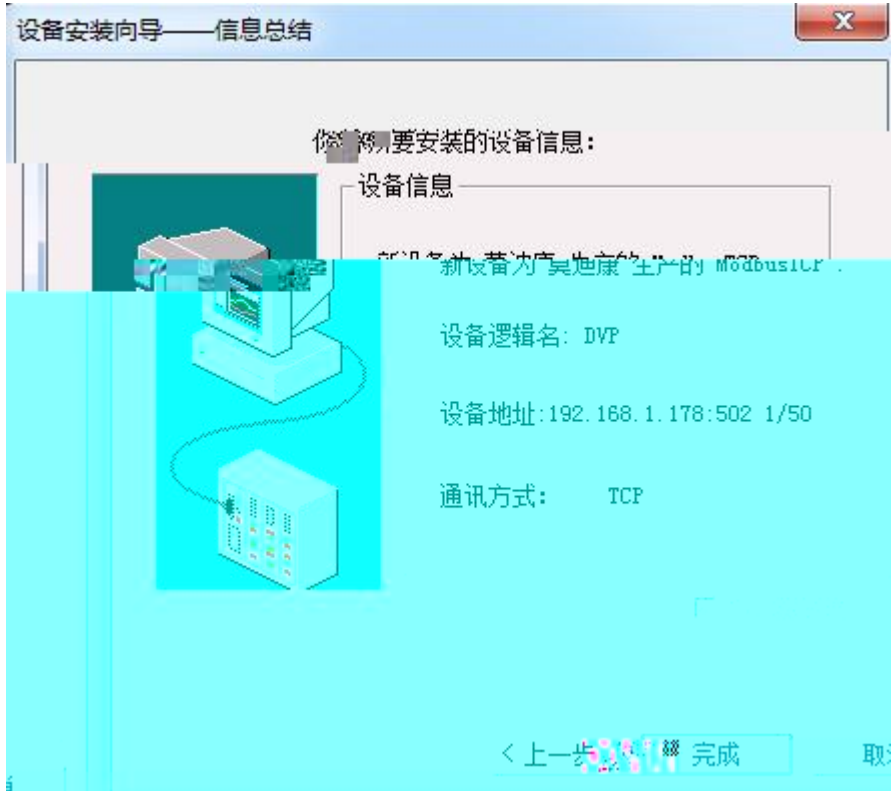




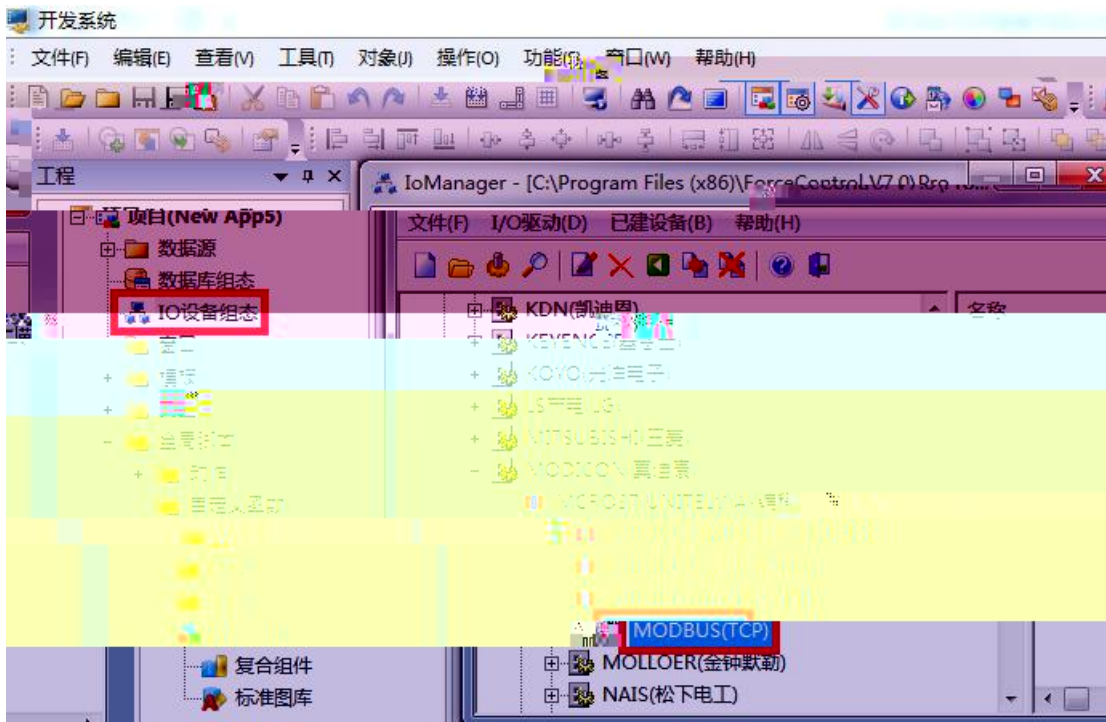


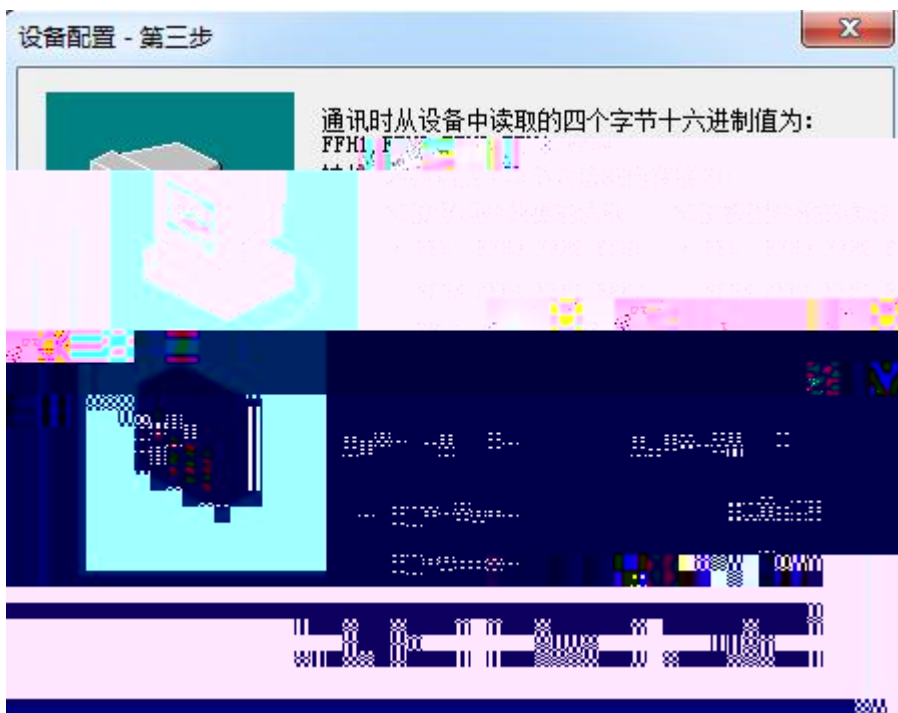
# RVNet KV

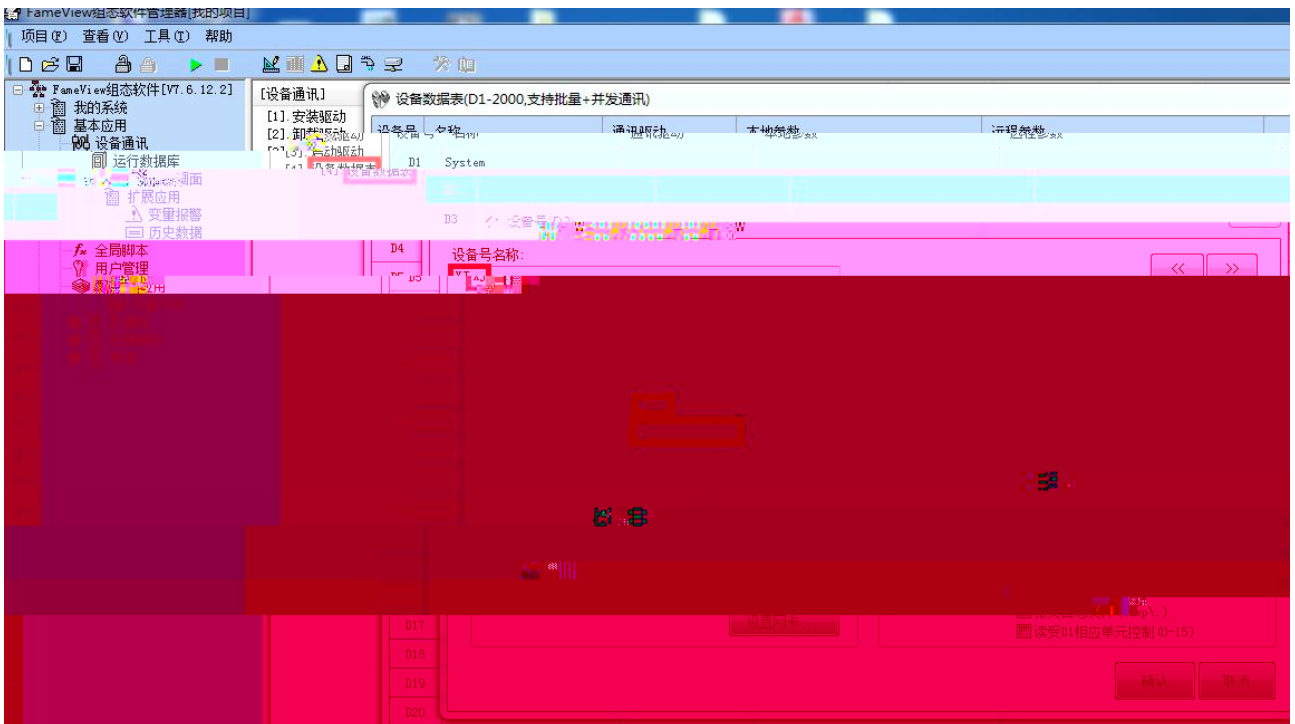
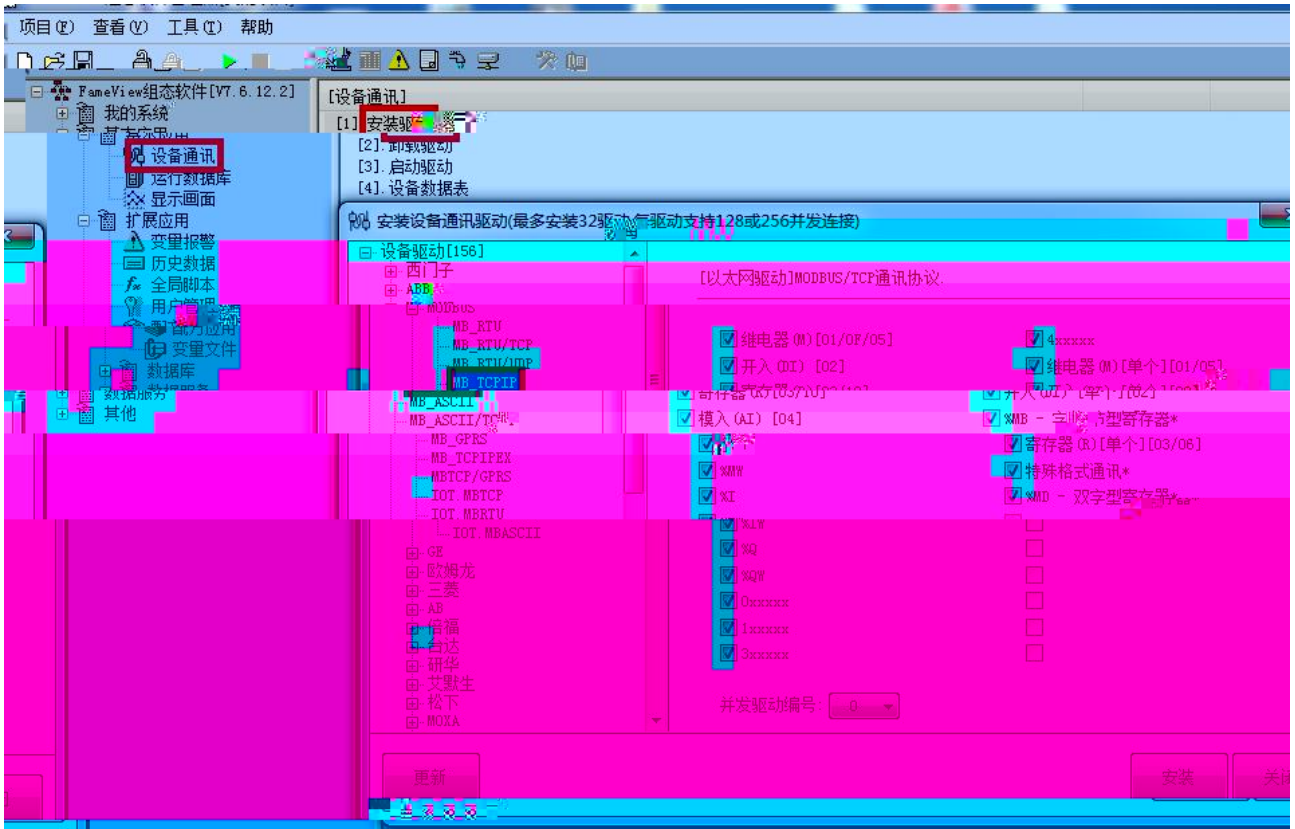


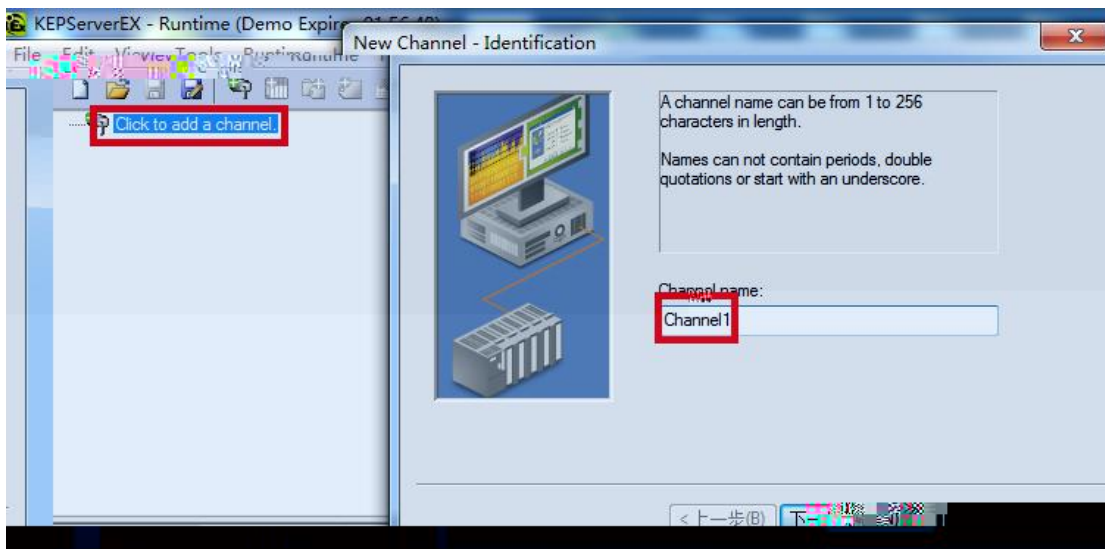


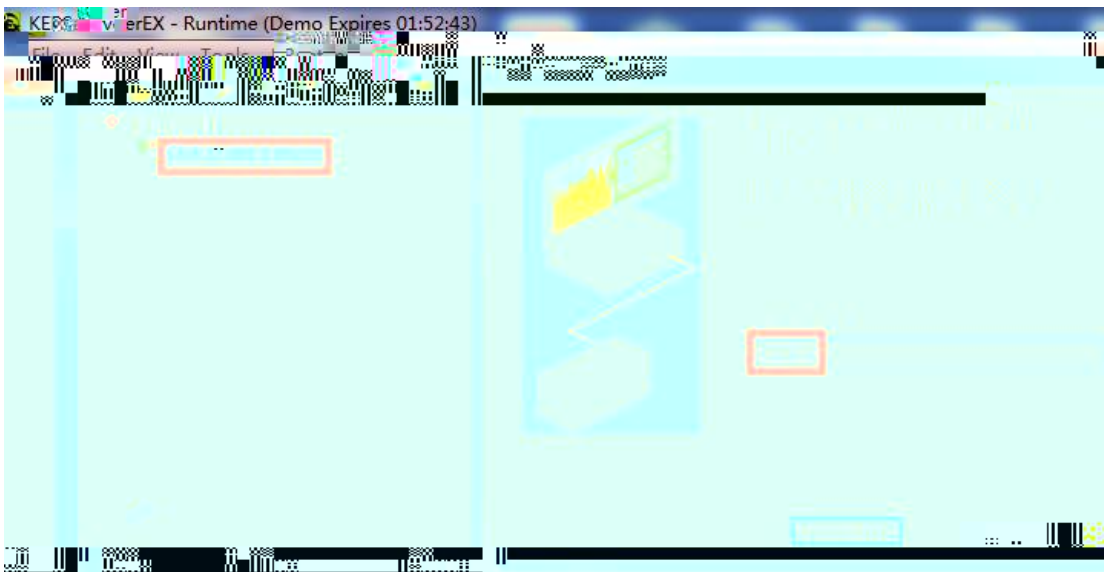
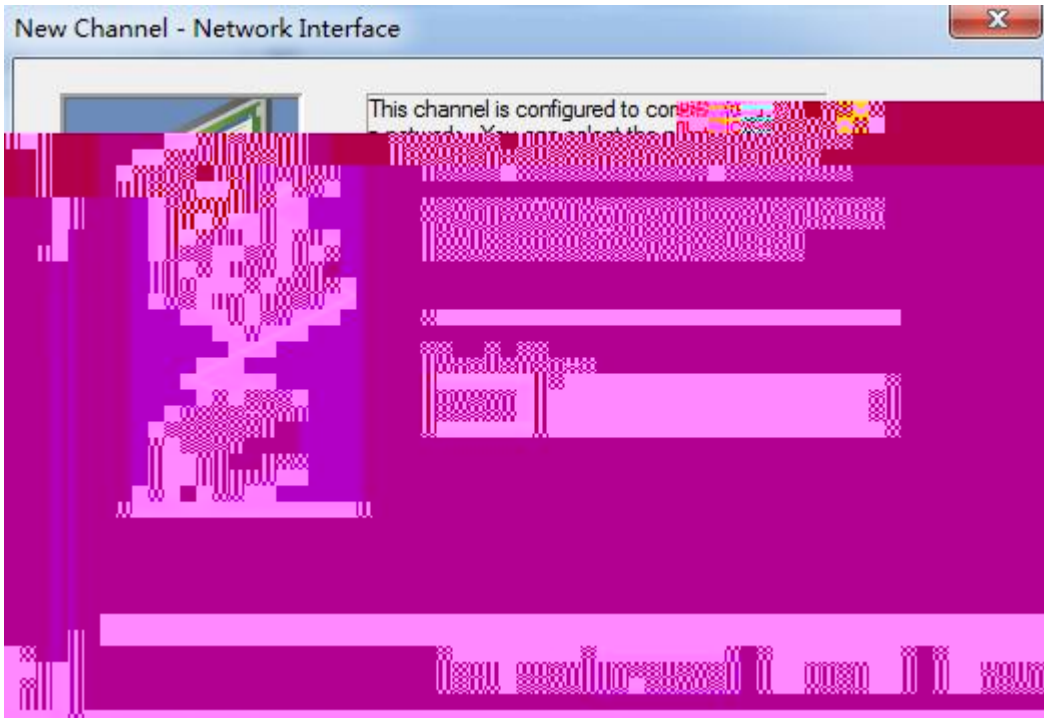
## RVNet KV

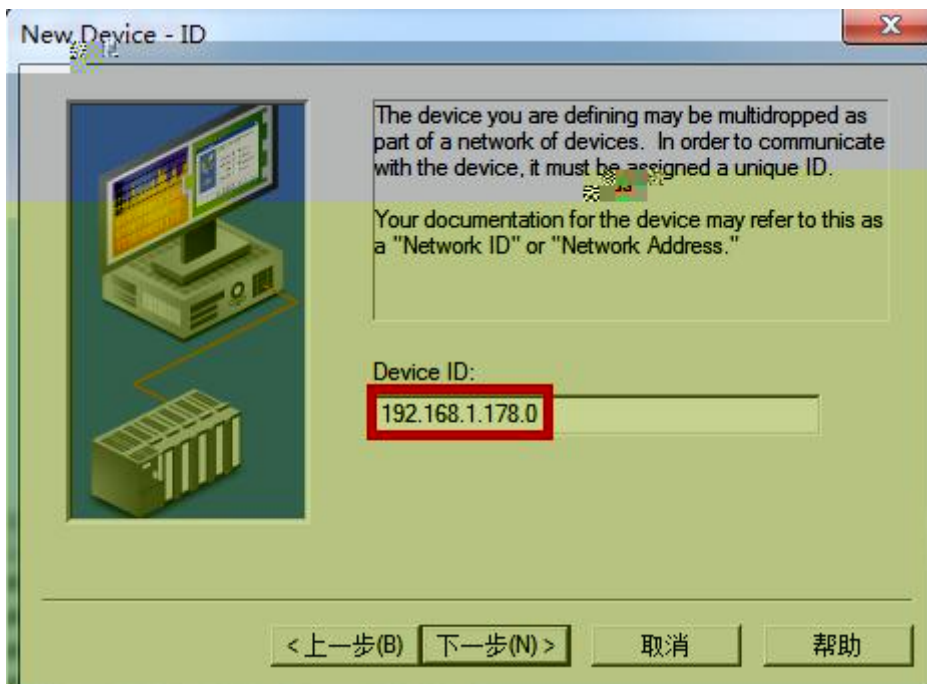
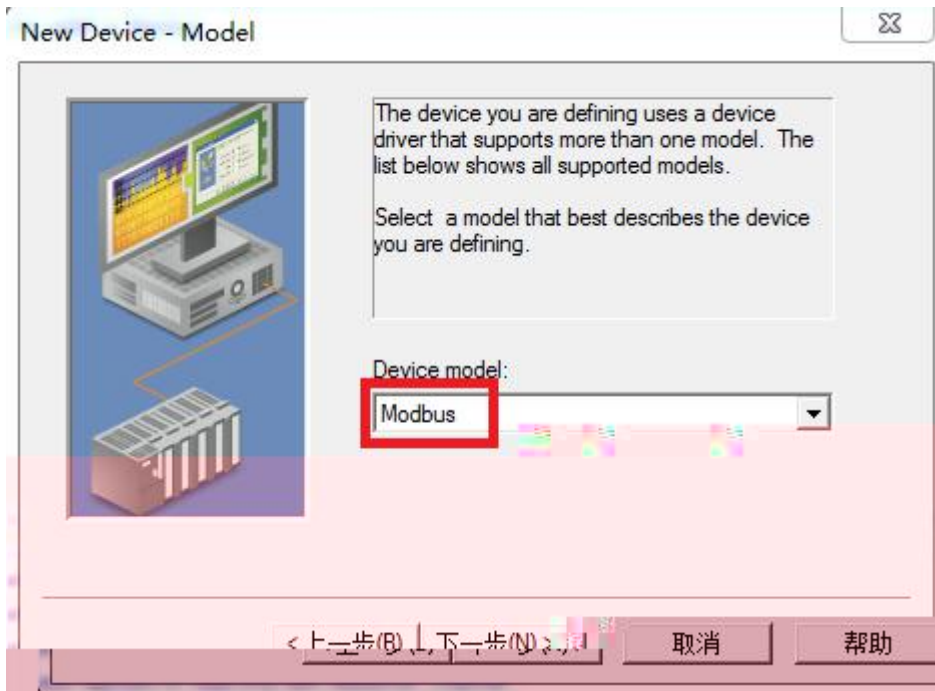


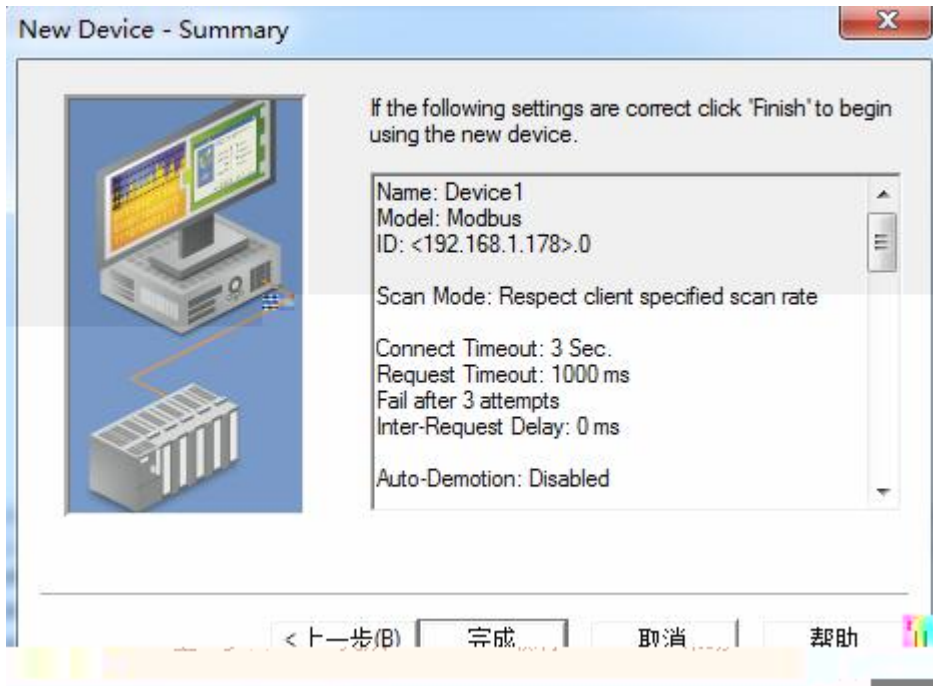






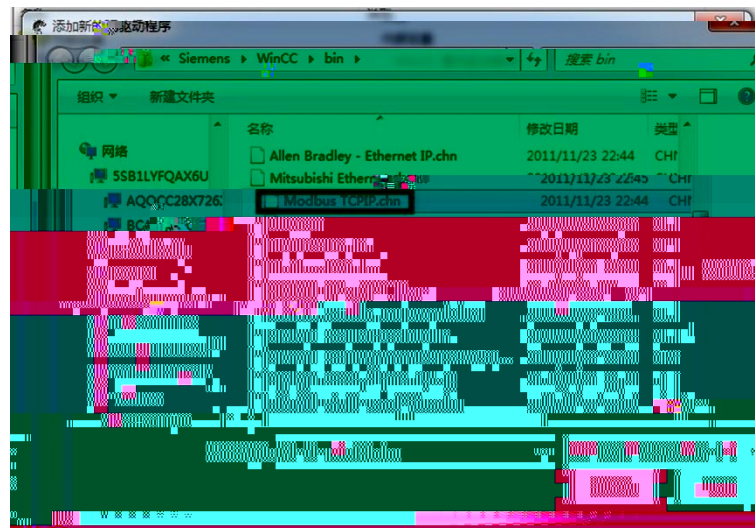


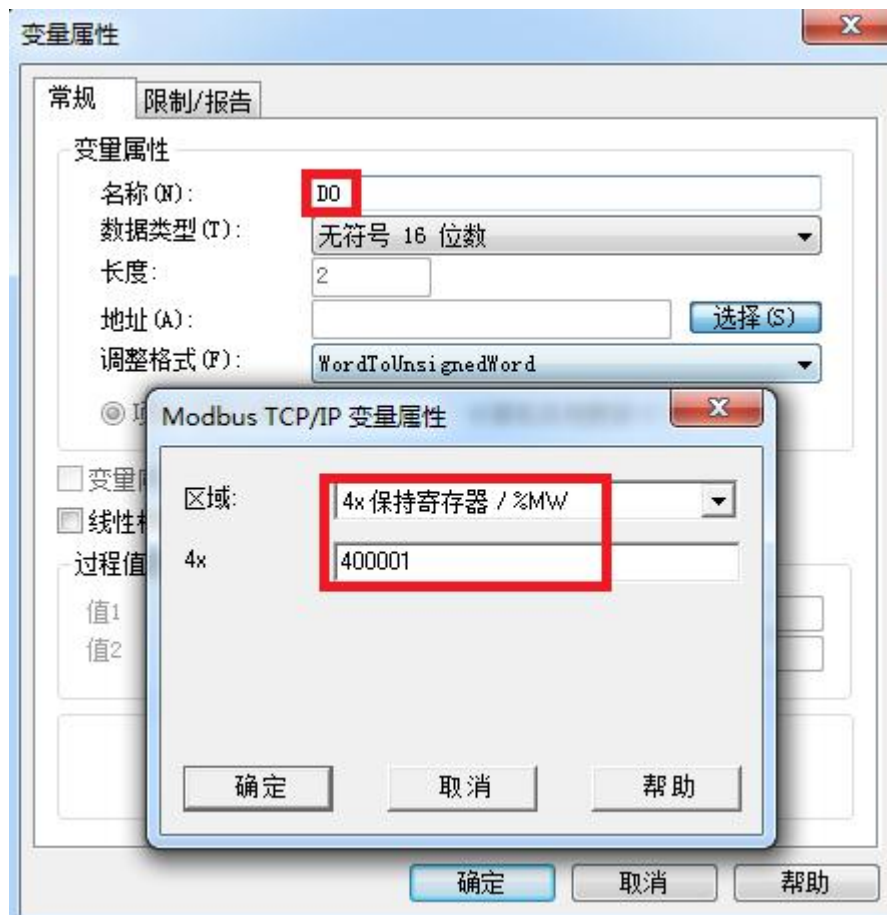
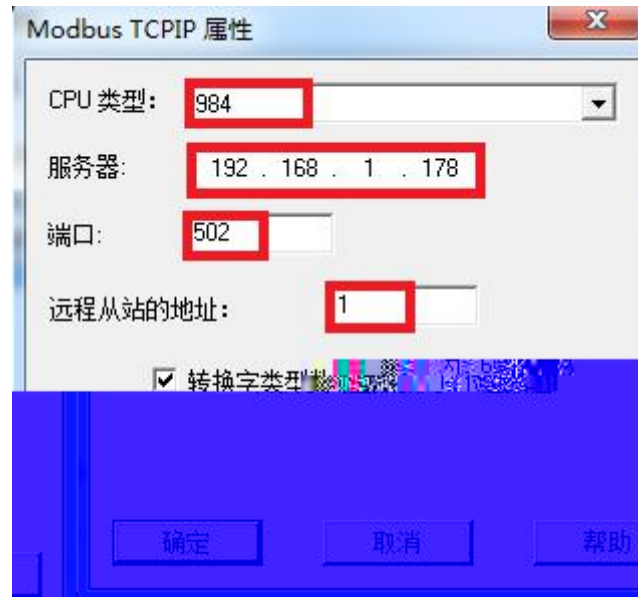




RVNet KV

WINCC





		KV		PLC					
		Pwr	COM1	COM2	Link				
		IEEE 802.3		Link/Active				Auto-MDIX	
		RJ45							
		10/100Mbps							
		KV STUDIO			ModbusTCP			RVNetTCP	
TCP		6							
X1	PLC	RS232							
		RJ11							
		9.6K	19.2K	38.4K	57.6K	115.2Kbps			
		KV							
X2	HMI	RS232							
		RJ11							
		9.6K	19.2K	38.4K	57.6K	115.2Kbps			
		KV							
		KV STUDIO							
OPC		KepWare OPC							
		IE		192.168.1.178					
		KV				24VDC			
		24VDC/100mA							
		0~60							
		90%							
		35mm							
		2014/30/EU							
RoSH									
		4.5mm/30Hz/10Min							
ESD		6KV							
		60		168		50000			
		30	PLC		1	3		0	
		CE							
L*W*H		90*24*65mm							
		120g							

